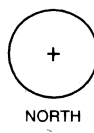
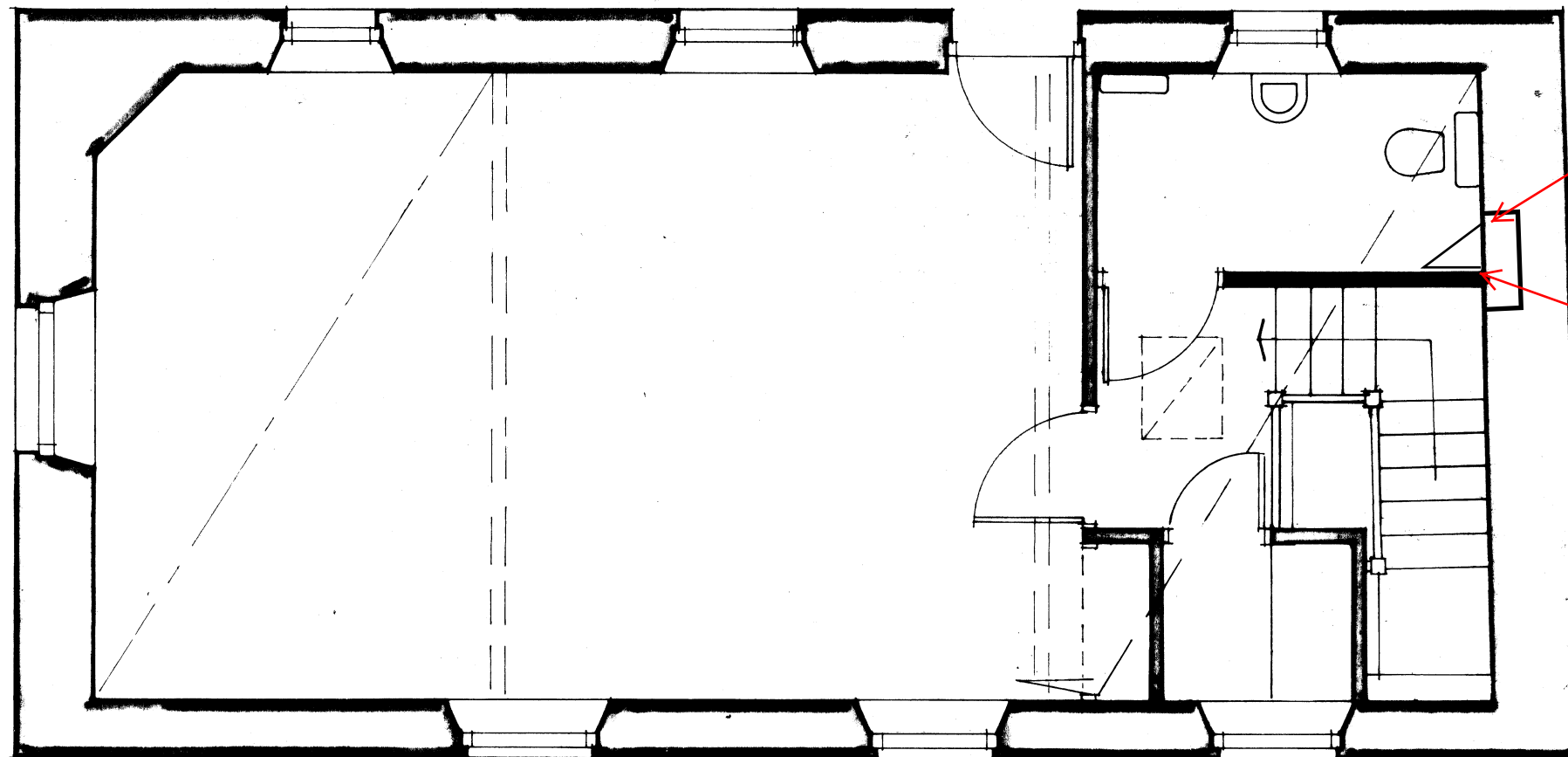


All works to be carried out in accordance with the Building Regulations, the relevant British Standard Codes of Practice, and the requirements of the Local Authority.  
 All drawings and dimensions to be checked before commencement of works and production of shop drawings and any discrepancies immediately reported to the Architect. No dimensions to be scaled off the drawings unless approved by the Architect.  
 This drawing and the design depicted are the copyright of Richard Crooks Partnership.

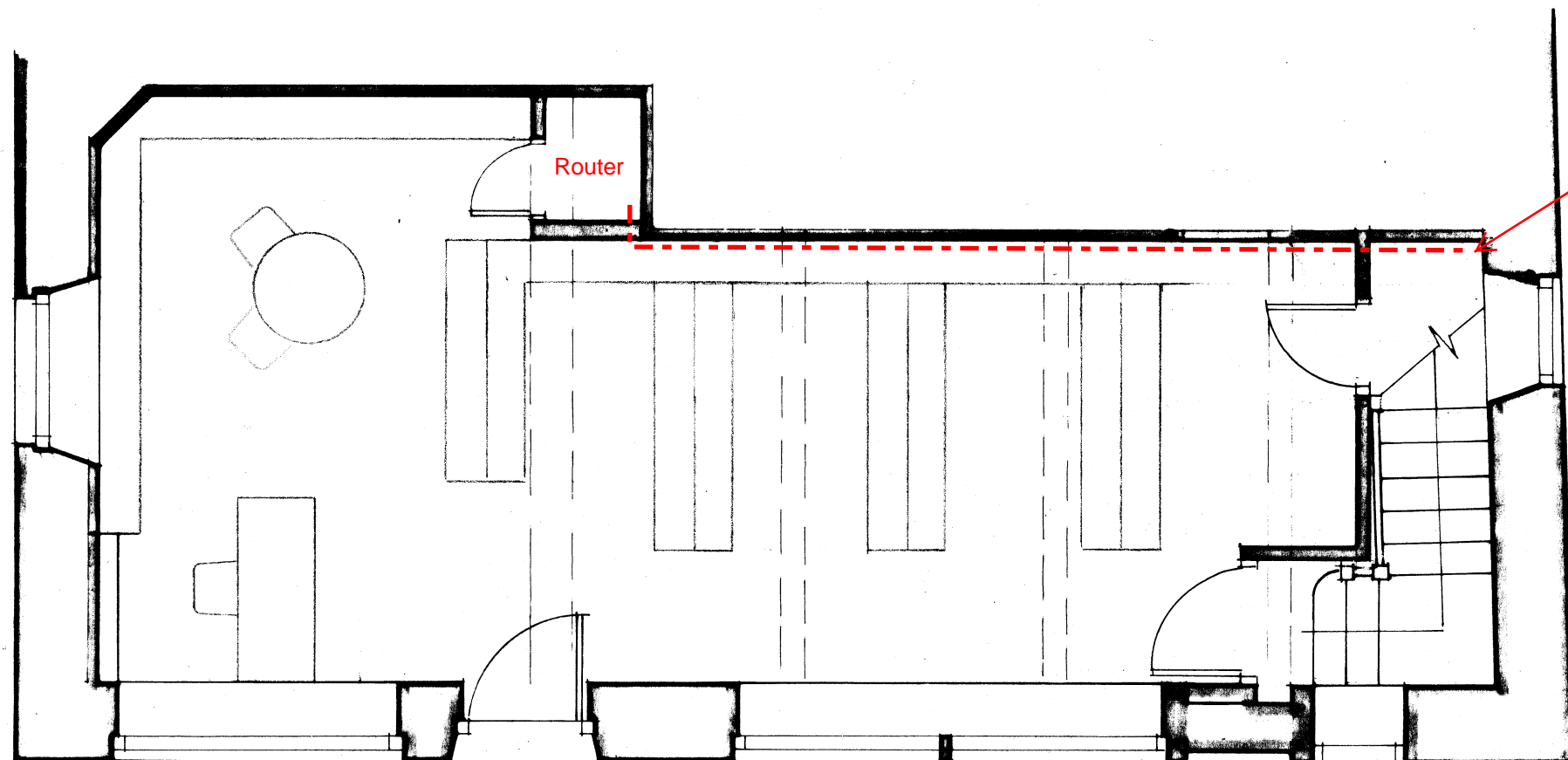


Revisions



Drop cable from Loft Space down into cupboard and on down into ground floor store.

If any surface trunking is absolutely necessary this must be tight in this corner.



Router

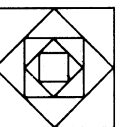
Cable drop down in corner to skirting level along and into end of skirting trunking along back wall of Library.

**Richard Crooks Partnership**

Chartered Architects

14 Calverley Lane, Horsforth  
 Leeds, LS18 4DZ

Telephone 0113 281 8080  
 Fax. 0113 258 4070



Client

**Addingham Parish Council**

Project

**Old School Room**  
 106 Main Street, Addingham

Drawing

**Repeater Cable Route**

Scale \_\_\_\_\_ Date \_\_\_\_\_

Drawing No. \_\_\_\_\_ Revision \_\_\_\_\_ Checked \_\_\_\_\_